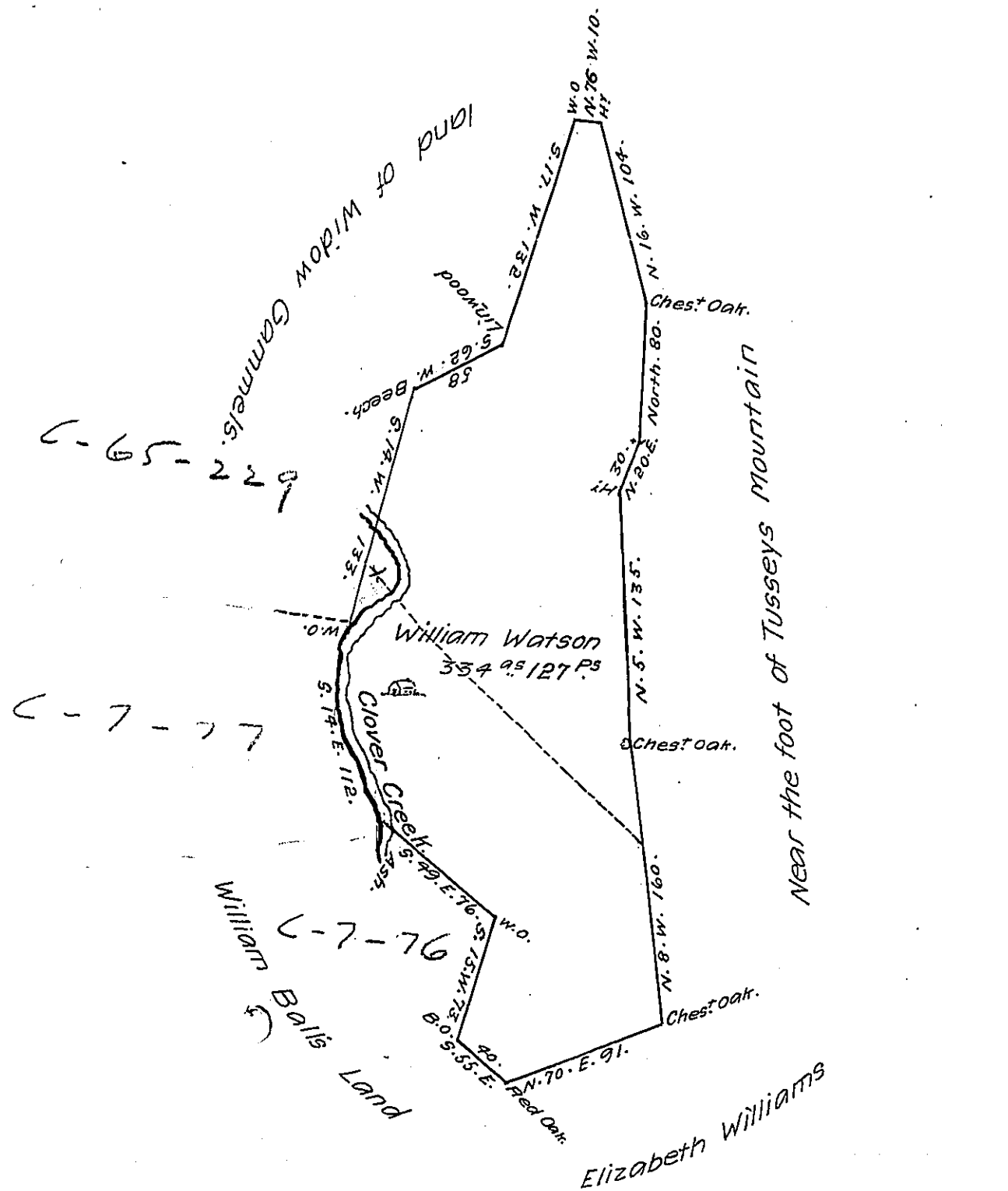


FORM NO 1.



Situate on the East side of Clover Creek in Woodberry Township in the County of Huntingdon Containing 334⁹⁵ 127^{P's} and the usual Allowance for Roads Surveyed the 6th day of April 1790 in pursuance of a Warrant Dated the 22nd Day of March 1785.

John Canan. D.S.

To Daniel Brodhead Esquire. S.G.

Note. the above Warrant Call for 200⁹⁵ and a Survey of 201⁹⁵ 32^{P's} was made on it on the 7th Day of May 1787 but not returned. Some time the Same Year the Commissioners of Bedford County Sold One hundred acres of it for the Taxes. the Addition was made last April & the land then Taken in would not be an object for a Second.

Warrant. J.C. In Testimony that the above is a True Copy of the Original Remaining in my Office. I have hereto Set my hand and Seal of Office at Philad^a this 10th day of September 1794.

Daniel Brodhead. S.G.

IN TESTIMONY that the above is a copy of the original remaining on file in the Department of Internal Affairs of Pennsylvania, made conformably to an Act of Assembly approved the 16th day of February, 1833, I have hereunto set my Hand and caused the Seal of said Department to be affixed at Harrisburg, this twenty-first day of May 1907.

Henry Howell

Secretary of Internal Affairs.